

Panasonic

ideas for life

2005
Video Intercom Systems



VL-GD001 (option)

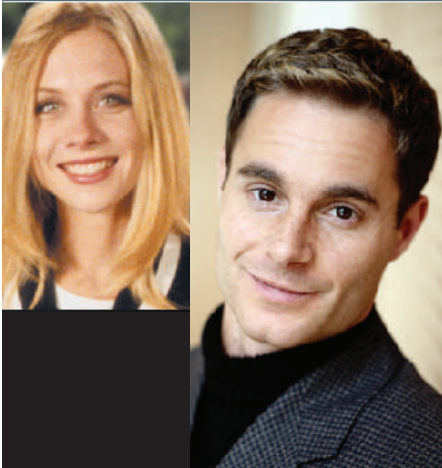


VL-G201



**Tough
Outside**

Built tough to resist attacks



Door station

Microphone

Ringer button

Speakerphone

Water drain hole



Withstands external impact **A rugged metal body**

Potential intruders will have a tough time tampering with this rugged metal body. For further resistance, we used special screws that are extremely difficult to remove. Choose either Brass or silver. With its solid appearance, the outside unit makes a good match with both traditional brick exteriors and more contemporary metal doors. And the body features a waterproof structure, so you can install it anywhere outdoors.

•Brass



•Silver



Lights up at night **Illuminated button**

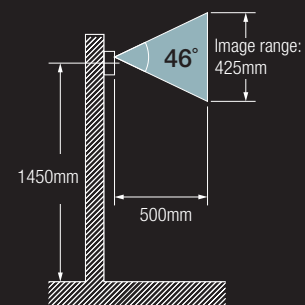
The ringer illuminates at night, making it easier for guests to find while also lending an attractive look to your doorway. When a visitor presses the button, a chime tone sounds at the indoor color monitor unit.



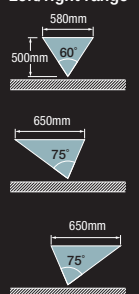
Adjust to doorway shape **Camera angle control**

You get a clear view of visitors at your door thanks to a camera that sweeps over a range of 425 mm up and down and 650 mm side to side. The camera's side-to-side aim range can be adjusted to fit installation conditions.



Upper/lower range




Left/right range

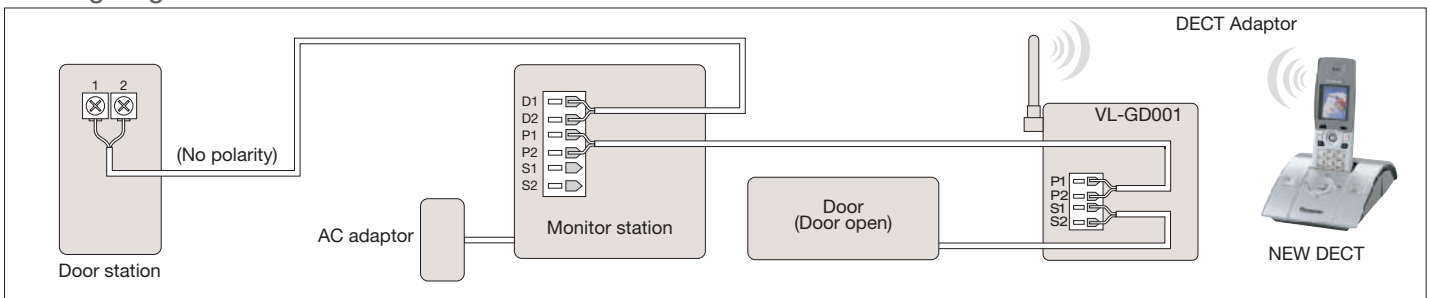


Specifications

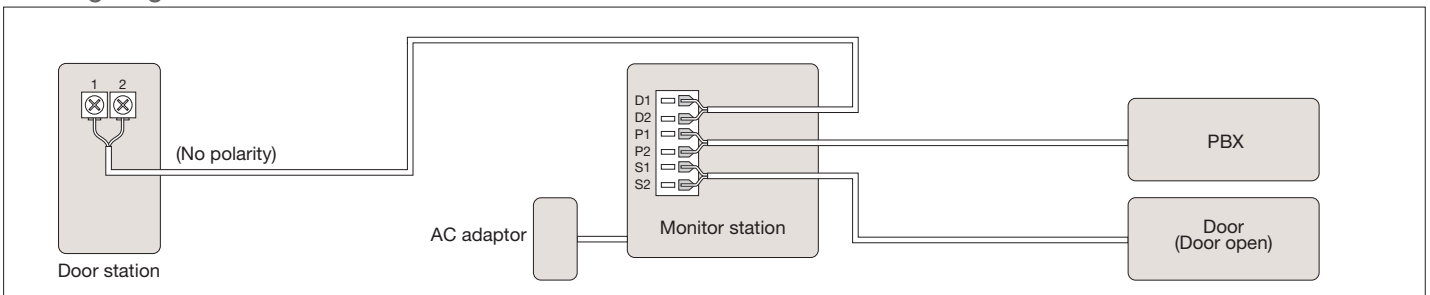
VL-G201				
Monitor Station				
Design		Indication Time of Video Monitor	-Outside Call (Calling) -Monitoring -Outside Call (Talking) -Outside Call (Press to Talk)	
			Approx. 30 second 1 minute 1 minute 30 seconds 1 minute	
		Brightness	5 steps	
		System Configurations	1 monitor 1 camera	Installation Surface Mount / Desk Mount
		LCD Size	2.5"	Dimensions W136 x D32 x H136 mm
Communication	Handsfree or Press-to-talk	Material	ABS	
Answer by Voice	•	Power Consumption	Stand-by 30 mA, Operation 420 mA (DC 24V)	
Ringer Volume	OFF / LOW / HIGH	Operating Environment	0°C~40°C	
Camera Capability	1	Monitor~Power Supply	30 m (Fire Alarm Cable)	
Door Strike	• (1circuits)	Main Monitor~Camera	100 m (CAT3 Cable)	
PBX / Doorphone Adaptor Connect	• (1circuits)			
Door Station				
Design		Angle Adjustment	Left & Right	
		Operating Environment	-10°C~50°C	
		Power Supply	From Monitor	
		Lighted Key	• (Blue Light)	
		Camera Device	CCD (250k pixels)	
Colour	Silver / Brass	Minimum Brightness	Approx. 1 Lux / 50 cm from Camera	
Material	Aluminum	Infrared Camera	•	
View Area	-Horizon (50cm from Camera)	Approx. Left & Right 58 cm (60°) Angle Change 65 cm (75°)	Splash Resistant	
	-Vertical (50cm from Camera)	Approx. Upside 43 cm (46°)	Dimensions	
			W90 x D35 x H165 mm	

VL-GD001 (option)			
Doorphone Adaptor			
Design		Dimensions	Approx. W140 x D41.5 x H140 mm
		Mass (weight)	Approx. 245 g
		Operating Environment	0°C to 40°C, Up to 90% RH (Relative Humidity) non condensing
Power Supply	9V DC	Installation method	Wall mount (Wall mount bracket included)
Current Consumption	Stand-by: Approx. 48 mA Operation: Approx. 120 mA	External Material	Flame retardant ABS resin

Wiring diagram



Wiring diagram



Panasonic